

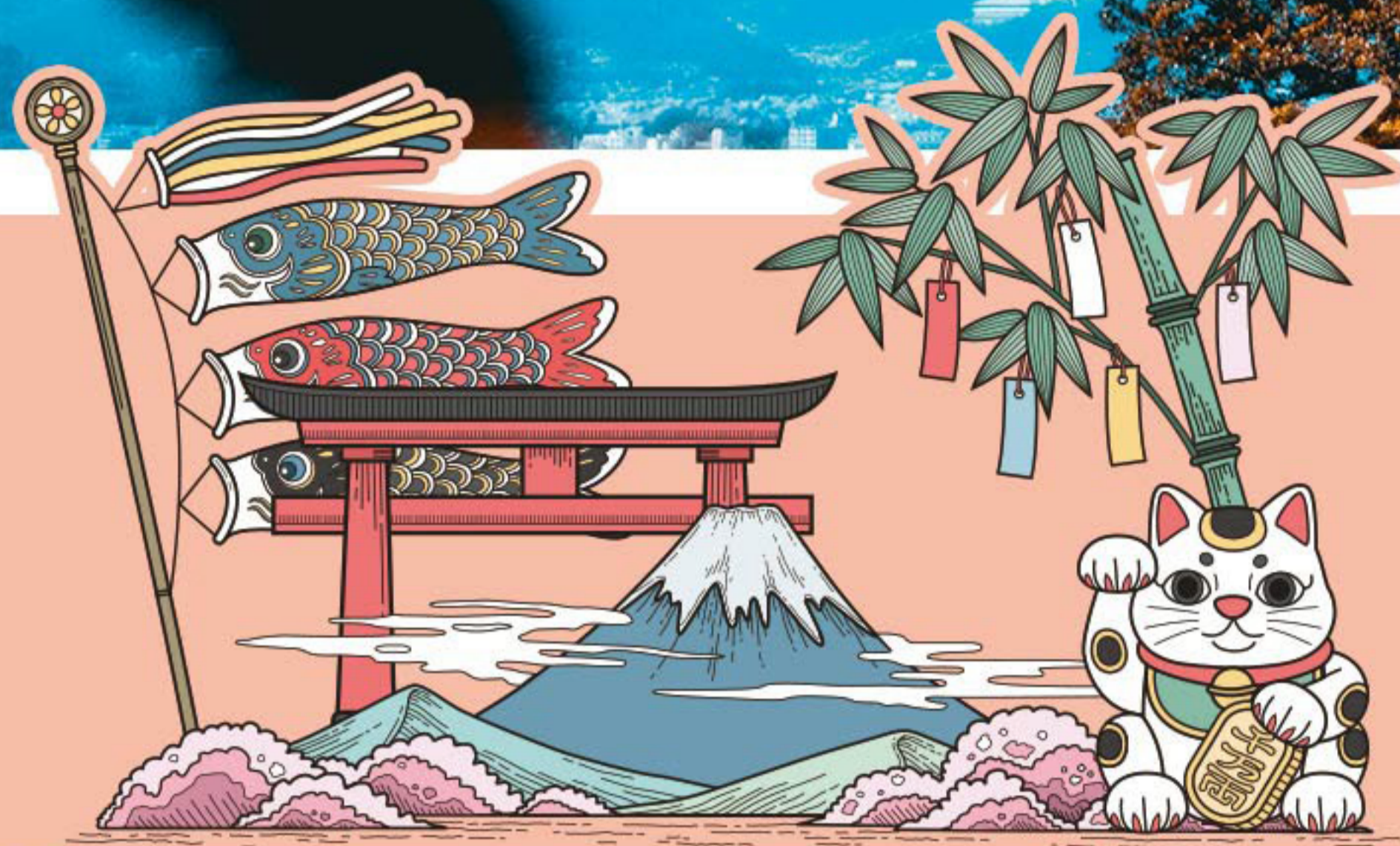


TOUR CODE: DB7E

2025

JAPAN
Kanto, Kansai
7 Days Tour

Adult
\$1199/PP



Considerate Service

- Provide pick up service on the first day of your arrival at Narita/Haneda Airport



High-Quality Hotels

- Stay at 4-5 star hotels in downtown of Tokyo, Kyoto and Nagoya
- Arrange hot spring hotel in Mt. Fuji Area, experience Japanese-Style hot spring and dinner in hotel



Well-Arranged Tour

- Visit attractions in Tokyo. Enjoy the beautiful Mt. Fuji. Visit the famous Nagoya Castle. Stroll through Kyoto. Visit the popular Nara Deer Park. Enjoy your time in Osaka. Taste Japanese-Style cuisines.
- Special adding view spots in spring/autumn. (depends on the weather and climate)



Adult \$1199	Child under 12 w/ bed \$1199	Child under 12 w/o bed \$1139
Single room \$550	Extension Market Price	

*All prices are based on US Dollar.
*Arrange English-speaking tour guide(or driver guide).
* High Season Surcharge(Dates in **Red Font**): USD250/pp, Single room Sup. USD100/pp.

From 1/11/2025, depart from the U.S. / Canada on designated Saturday, Minimum 2 PAX

Jan 11	Jul 5, 12, 19, 26
Feb 8	Aug 2, 9 , 16 , 23, 30
Mar 8, 15, 22 , 29	Sep 6, 13, 20, 27
Apr 5 , 12 , 19, 26	Oct 4, 11, 18 , 25
May 3 , 10, 17, 24, 31	Nov 1 , 8 , 15 , 22, 29
Jun 7, 14, 21, 28	Dec 6, 13, 20

Day1

Home/Tokyo

Take the flight to Tokyo

On the flight

Day2

Arrive in Tokyo *NRT/HND

Pick-up service are served from 08:00am to 22:00pm in Narita and Haneda Airport, we will have a receptionst onsite to assist you to transfer to the hotel. Please provide your flight number before the tour, we will arrange the departure time based on all guest's flights of the tour group, please kindly noted it will take some times to wait for others. *The hotel check-in is available after 3pm with your passport.

Hotel: Tokyo Dome Hotel or Shinjuku Granbell Hotel or similar

Day3

B, L, D

Tokyo-Mt. Fuji

After breakfast, visit Senso-ji Temple, and enjoy the vibrant stalls of Nakamise Dori. View the Tokyo Skytree from afar. Then, visit the famous Nijubashi Bridge, which is outside of the Imperial Palace out gardens. Later, head for Shinjuku Kabukicho. Finally, transfer to Hot Spring Hotel near Mt. Fuji Area and enjoy a buffet or Japanese-Style dinner in hotel.

Special adding spots in Spring(Departure date 22nd Mar-12th Apr): Chidorigafuchi Park, Shinjuku Gyoen

Special adding spots in Autumn(Departure date 18th Oct-15th Nov): Yoyogi Park, Rikugien Garden

Hotel: Fuji Kawaguchiko Resort Hotel or Fujimihana Resort or similar

Day4

B, L

Mt. Fuji-Nagoya

In the morning, visit Mt. Fuji 5th Station, located halfway up the mountain (If weather not permitting, go to Mt. Fuji World Heritage Center instead). Then, head to Oshino Hakkai. Enjoy the traditional buildings and amazing view of Mt. Fuji. Then, go to Bussharito Heiwa Park to appreciate the gardening featured with Japanese characteristics. Later, transfer to Nagoya and stroll on the famous Osu Shopping District. Dinner is on your own arrangement.

Hotel: Hotel Keihan Nagoya or JAL City Nagoya Nishiki or similar

Day5

B, L

Nagoya-Kyoto

After breakfast, visit the Nagoya Castle, which is one of the most important castle towns in Japan. Then transfer to Kyoto. Visit the Kiyomizu-dera Temple, a World Cultural Heritage site, and stroll along the Sannenzaka & Ninenzaka Streets. Afterwards, head to Gion, a good place to experience the ancient charm of Kyoto. Visit the Yasaka Shrine where people receive blessings and pray for good fortune. Walk on Hanamachi Street, the most stylish geisha district in Japan. Dinner is on your own arrangement.

Special adding spots in Spring(Departure date 22nd Mar-12th Apr): Maruyama Park

Special adding spots in Autumn(Departure date 18th Oct-15th Nov): Arashiyama Area-Togetsukyo Bridge

Hotel: Hilton Garden Inn Shijo Karasuma or Keihan Kyoto Hachijoguchi or similar

Day6

B, L

Kyoto-Osaka

After breakfast, visit Fushimi Inari Taisha Shrine. The seemingly endless path of vibrant orange torii gates is one of the most famous images of Japan. Afterward, visit Nara Park where full of friendly deer. And don't miss the beautiful view in Kasuga Taisha Shrine. Visit the Osaka Castle Park (tower/museum excluded), the landmark of the Osaka. Enjoy your time in Shinsaibashi, the largest shopping district and taste the local cuisine at Dotonbori Food Street. Dinner is on your own arrangement.

Hotel: Sheraton Miyako or New Hankyu or Bellevue Garden Kansai or similar

Day7

B

Leave Osaka*KIX

After breakfast, transfer to Kansai International Airport by public transportation on own expense (guide will give advice in advance). End of the journey.



Japanese Cuisines